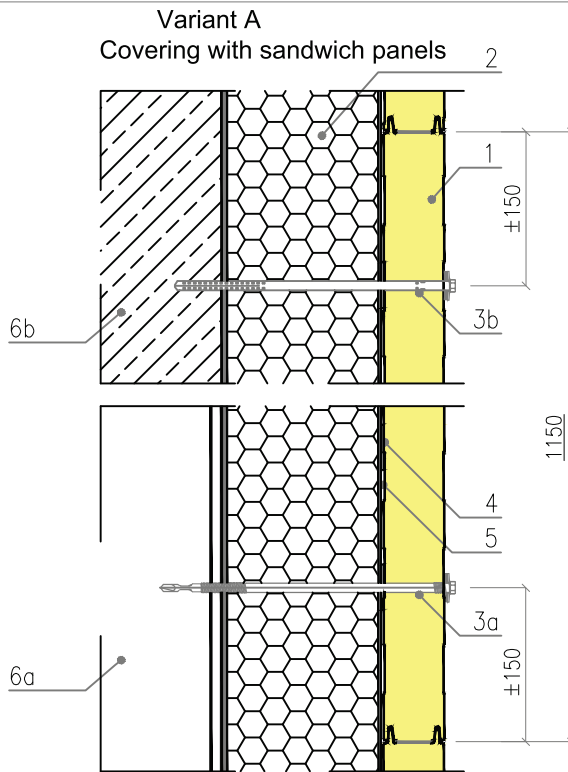
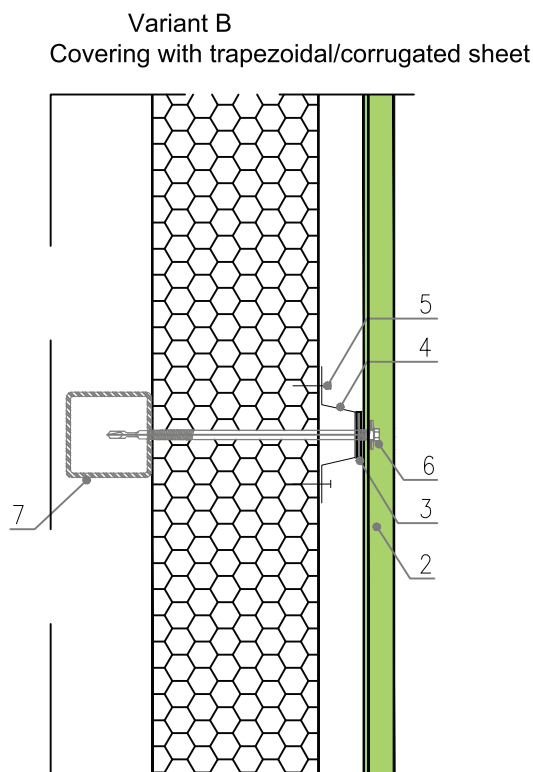


Drawing 34.

S Panel PIR; MWF; EPS - assembly of additional elevation on existing panels

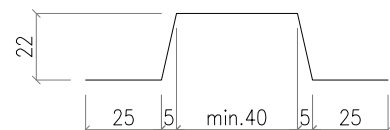


1. S Panel sandwich panel (horizontal configuration)
2. Existing light cladding panels
- 3a. Drive screw with EPDM washer\*\*\*\*\*
- 3b. Fastener to the reinforced concrete with EPDM washer\*\*\*\*\*
4. PES tape vertically along fasteners line
5. PES tape horizontally (3 rows for each panel)
- 6a. Steel column
- 6b. Reinforced concrete column



1. S Panel sandwich panel (horizontal configuration)
2. Trapezoidal/corrugated sheet\*
3. Self-adhesive PES sealing tape
4. Custom steel section according to the drawing\*\*
5. Galvanized self-drilling fastener 4.8 x 20 mm\*\*\*
6. Drive screw with EPDM washer\*\*\*\*\*
7. Steel section according to the design of the structure

Custom steel section of sheet 0.88 mm



- \* Additional elevation assembly should have configuration compatible with existing one.
- \*\* Shape and location of steel section 5 must enable proper assembly of fasteners (drive screws). It should be installed close to the line of existing panels fasteners.
- \*\*\* Fasteners 6 should be installed interlocked, every approx. 300 mm.
- \*\*\*\* In order to avoid collision, fasteners 7 should be placed with offset from the existing fasteners. Fasteners 7 are coated in covering colour.
- \*\*\*\*\* In case of existing panels with exposed fasteners, dismantling project should be developed so as to avoid a risk of the panel detachment from the support. Connectors 3a and 3 b serve as fasteners to both existing and new panels.